

# » Access Control Application

# Access Control Application «

## ■ 1.1 Hotel Key Card

## ■ 1.2 Parking Card



**Specifications:**  
 Material: PVC, PET, ABS, PETG  
 Size: CR 80- ISO 86mm\*54mm, or customized size  
 Thickness: 0.8+-0.04mm or customized thickness  
 Frequency: 125khz/13.56mhz, 860-960mhz  
 Printing/Color: CMYK 4C offset printing, single or full color on both sides. Pan tone colors or silk-screen printing colors.  
 Craft:  
 Finish: Glossy, matt, frosted  
 Magnetic stripe: 3 tracks magnetic stripe, LOCO 300 oe; HICO 2750 oe, encoding for magnetic stripe  
 Barcode: Code 128, Code 39, EAN-13 etc.  
 Hole punched, hot stamping gold/silver color, signature panel, embossing number, UV serial numbers, UID chip number printing etc.

**Application:**  
 Access control, parking, shopping, time attendance, loyalty program, etc.



**Specifications:**  
 Material: PET, ABS, PETG,PVC  
 Size: 86mm\*54mm, or customized size  
 Thickness: 0.8+-0.04mm or customized thickness  
 Frequency: 13.56mhz or 860-960mhz or both  
 Temperature: -10 C +70 C  
 Printing/Color: CMYK 4C offset printing, single or full color on both sides. And also pan tone colors or silk-screen printing color  
 Craft:  
 Finish: Glossy, matt, frosted  
 Bar code: Code 128, Code 39, EAN-13 etc.  
 Hole punched, hot stamping gold/silver color, signature panel, embossing number, UV serial numbers, UID chip number printing etc.  
**Application:**  
 Prepaid card, dining, beauty salons, insurance, shopping.



## » Access Control Application

### ■ 1.3 Epoxy Tag



#### Specifications:

Material: PVC coated with epoxy  
 Size:  $\Phi 40$ mm or customized size  
 Thickness: 2.5mm $\pm$ 0.05mm or customized thickness  
 Frequency: 125khz, 13.56mhz  
 Working temperature: -25-55 C  
 Features: durable, waterproof, abrasion resistant, anti-corrosive etc.



#### Application:

Access control, public transportation, membership card etc.

### ■ 1.4 Key Fob



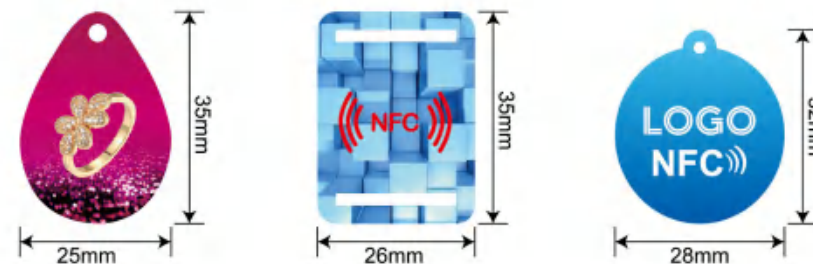
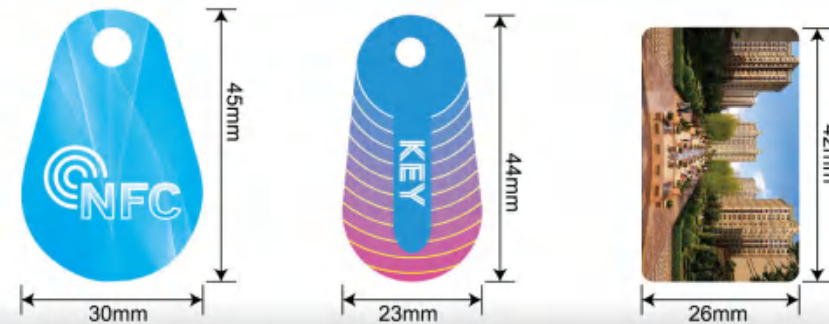
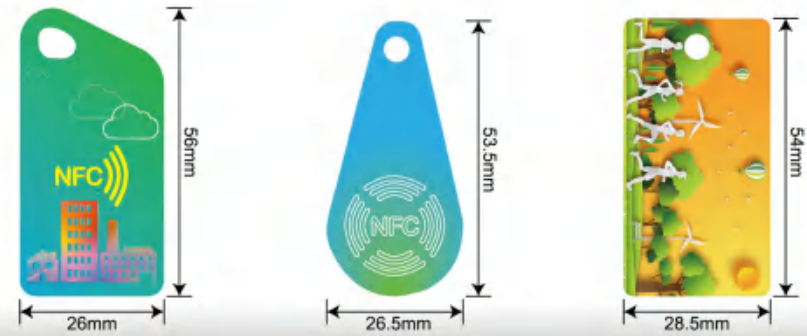
#### Specifications:

Material: ABS  
 Size: 41\*32\*4.1mm or customized size  
 Frequency: 125khz, 13.56mhz  
 Color: blue, yellow, red, green, black, white, gray, etc.

#### Application:

Access control, public transportation, membership card, attendance, parking etc.

## Customized NFC Tag «



# » Access Control Application

## ■ 1.5 Silicone Wristband



### Specifications:

Material: silicon rubber  
 Size: Fixed or adjustable  
 Frequency: 125khz, 13.56mhz, 860Mhz-960Mhz  
 Working temperature: -40°C to 120°C  
 Color: blue, green or customized color, etc.

**Application:** SPA, hotel, swimming pool, sports timing, access control, sauna, cruise etc.

## ■ 1.6 Tyvek Wristband



### Specifications:

- 1) Material: Tyvek
- 2) Size: Fixed or adjustable
- 3) Frequency: 125khz, 13.56Mhz
- 4) Working temperature: -10°C to 50°C
- 5) Color: blue, green or customized color, etc.

**Application:** Gym, swimming pool, spa hotels, ticketing, access control, concerts, events, hospital etc.

# Payment Application «

## ■ 2.1 NFC Card



### Payment Card Specification :

Material : PVC/PET/ABS/PETG  
 Size :85.6X54mm or customized  
 Frequency:13.56Mhz  
 Printing :offset printing,digital printing, silk screen printing

### Application :

Mobile payment, NFC payment, gift, oil serving card, shopping card, VIP card, loyaty program ,peer to peer information exchange,etc.

### Popular chip :

- NTAG213/215/216
- MIFARE ® Classic 1K /4K
- MIFARE ® Plus S/X/EV1 2K/4K
- MIFARE ® Plus SE
- MIFARE ® DESFire EV1/EV2
- MIFARE ® Ultralight C
- MIFARE Ultralight ® EV1
- ST25TV02K
- ST25TV512
- ST25TA 16K / 64K

## ■ 2.2 VIP Card



## ■ 2.3 Loyalty Card



# »» Payment Application

## ■ 2.4 Prepaid Card



## ■ 2.5 PVC Wristband



# Public Transit Application ««



## 3.1 Transit Card- Metro ■



### Specifications:

Material: PVC/PET/PETG/ Paper

Size: 85.6\*54mm

Thickness: ISO 0.76+/-0.04mm; Ultra-Thin: 0.5+/-0.04mm

Printing: Offset printing , Silk-screen printing

Popular Chip: MIFARE Classic EV1 1K/4K; DESFire EV1/ EV2 2K/4K/8K; Ultralight EV1, Ultraligh C etc.

## »» Public Transit Application

### ■ 3.2 Ultra Thin Transit Card-Paper Material



#### Transit Card- Metro

Material : PVC/PET/PETG/Paper

Size: 85.6\*54mm

Standard Thickness: 0.76+/-0.04mm;

Ultra-Thin : 0.5+/-0.04mm

Printing: Offset Printing, Silk-screen Printing;

Popular Chip: MIFARE Classic EV1 1K/4k,

DESFire EV1/EV2 2K,4K, 8K,PLUS SE 1K,

PLUS X/S 2K/4K,



### ■ 3.3 ABS/PC Token



#### Token-Metro

Material: ABS/PC/PPS

Size: Customize

Thickness : 2-3mm, or Customize

Craft: Injection Model or Ultrasonic

Popular Chip: MIFARE Classic EV1 1K, Ultralight C,

Ultralight EV1, etc.

# NEW

### »» Satin Surface



### »» Blocking Card



### Embossing Craft ««



### LED Smart Card ««

## »» Garment Application

■ Various size to be customized

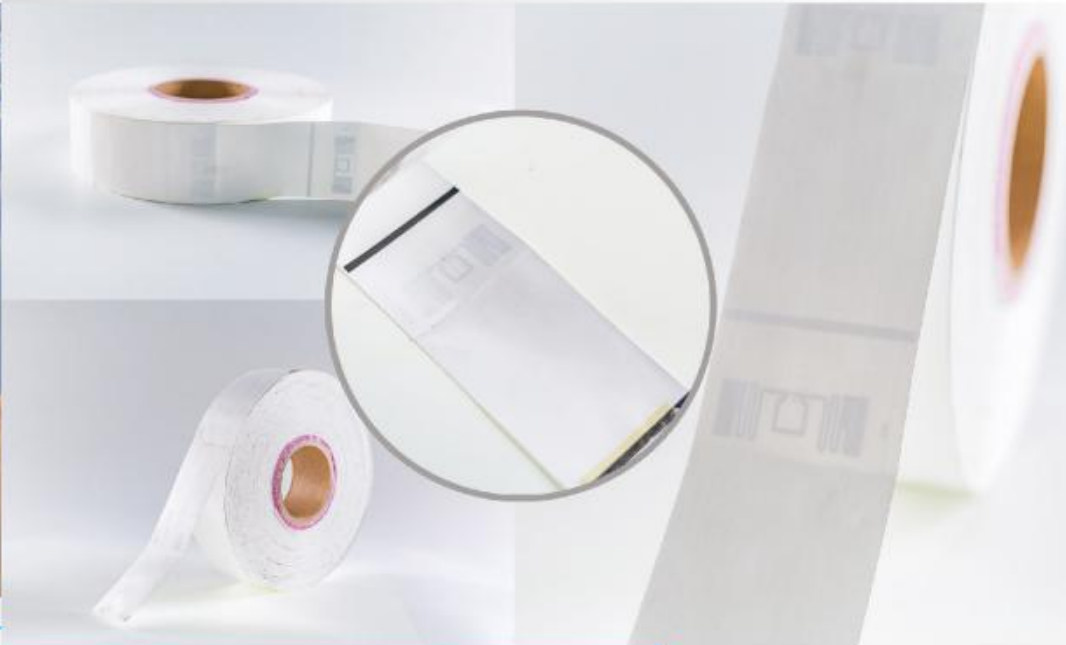
## Garment Application ««

4.3 Non- Woven Fabric ■



4.1 Hang Tag ■

4.2 Blank white Sticker



### Hang Tag

Skillfully manufactured with various materials and with the latest printing technology. Accurate printing level and perfect management to every delivery. Automatic speedy production line for implementing string RFID hang tag



### RFID Garment Management Label

#### Advantage:

#### In Factory:

Streamlining all aspects of merchandise tracking, eliminating labor-intensive manual tasks (solid hand-count)

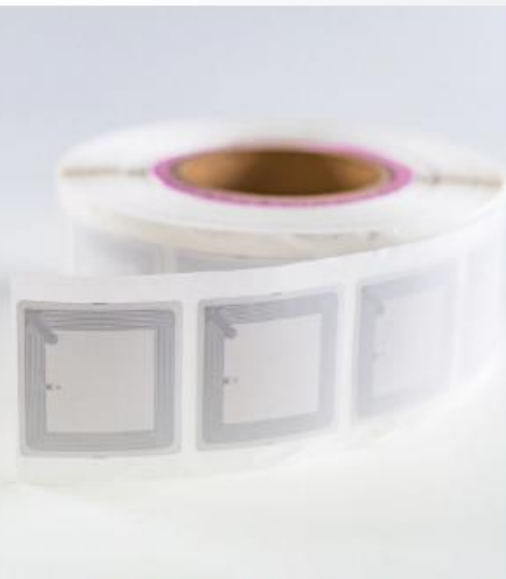
#### In Retail:

Accurately identify and register hundreds of items and data instantly to achieve the real-time inventory visibility, improve operational management, optimize stock movements and purchases. Improve customer satisfaction.



## »» Library Application

### ■ 5.1 13.56MHz I CODE SLIX Library Label



#### HF 13.56mhz library label

##### Specifications:

Material: coated paper/ thermal paper/ PET/ PP  
Size: Customized upon your demands  
Frequency: 13.56MHZ  
Available chips: I CODE SLIX; FUDAN FM13HF02N-TS  
Read range: 0.1-1 meter

**Applications:** Asset management, bookstore management, library management.

### ■ 5.2 UHF Impinj Monza R6 Library label

#### UHF library label

##### Specifications:

Material: coated paper/ thermal paper/ PET/ PP  
Size: Customized upon your demands  
Frequency: 860-960mhz  
Available chips: Impinj Monza R6  
Read range: 0.1-1 meter  
Antenna size: 3\*95mm

**Applications:** Asset management, audio and video product management, anti-theft management, bookstore management



## Retail Application ««

### ■ 6.1 Jewelry Label



### ■ 6.2 Anti-Liquid Label

#### Specifications:

Finished Size:58.5\*21mm,Customized  
Inlay Size:18\*35mm,Customized  
Frequency:UHF  
Material:PVC,PET,Coated Paper,etc  
Data expiration date: 100, 000 times read and write  
Antenna material: Etched aluminum  
Read distance : ≥ 1.0m  
Product features: inventory or read and write  
Label assignment: support a variety of data structures inside and outside the combination of encoding (synchronous or offline coding); Support for personalized key encoding  
Application:Asset Management,Inventory Control, Liquid packaging, settlement desk, automatic container sales, intelligent logistics, anti-counterfeiting traceability, unmanned retail and other areas



#### Specifications:

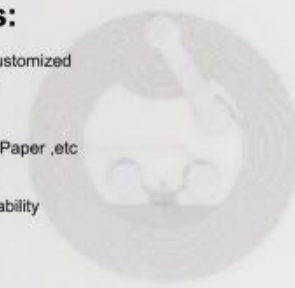
Size:68\*26mm,Customized  
Material:PVC,PET,Coated Paper,etc  
Frequency:UHF ,HF  
Application:Asset management, inventory control!

### ■ 6.3 Tamper proof Label :NTAG213 TT



#### Specifications:

Finished Size:24x51mm,customized  
Inlay Size:21.05x45.68mm  
Chip:Ntag213 TT  
Material:PET,PVC,Coated Paper ,etc  
Frequency:HF  
Application:Security Traceability

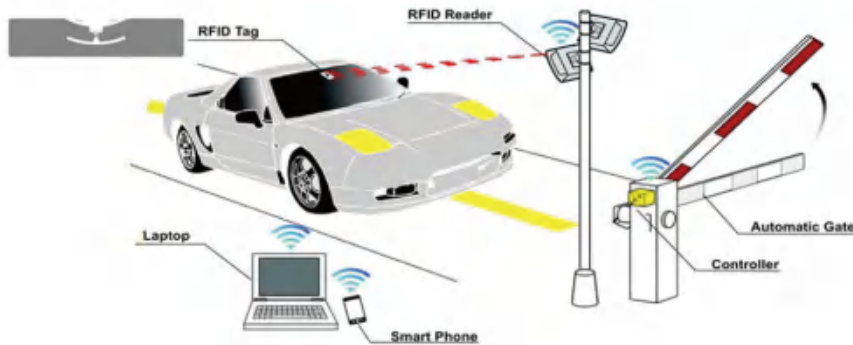


# » Wind Shield for Toll Application

# Logistics/ Warehouse «

## 7.1 Wind Shield Sticker HF/ UHF

## 8.1 Inventory



## LOGISTICS/ WAREHOUSE

1. Streamline warehouse operations: Warehouse staff can receive and manage stock with a reader, save time, and be more productive.
2. Orders & fulfillment: Keep track of orders, stock transfers, fulfillments and more across multiple warehouses globally.
3. Flexible order routing/Manage a global business easily. Create custom fulfillment workflows using powerful order routing functionality.
4. Reporting & analytics: Accurate real time insights into stock movement.

## 8.2 Asset Tracking



### Specifications:

Surface Material: Coated Paper/Bright White PET  
 Frequency: 860-960Mhz  
 Chip Type: Alien Higgs-3  
 Protocol: EPC C1G2 (ISO 18000-6C)  
 Read distance: 6-10m  
 Installation: 3M Adhesive  
 Customization: Printing, Encoding, Design

Application: Automatic Toll Collection/Parking Management/Vehicle Access Control

### Specifications:

Frequency: 860-960 MHZ  
 Chip type: UCODE7 UCODE8 ALIEN H3  
 Communication: EPC C1G2/ISO18000-6C  
 Read range: 1-10m  
 Packaging technology: Bonding+Converting  
 Surface material: Coated paper/Bright white PET/PP synthetic paper/Thermal paper/PVC  
 Working temperature: -40°C~+85°C

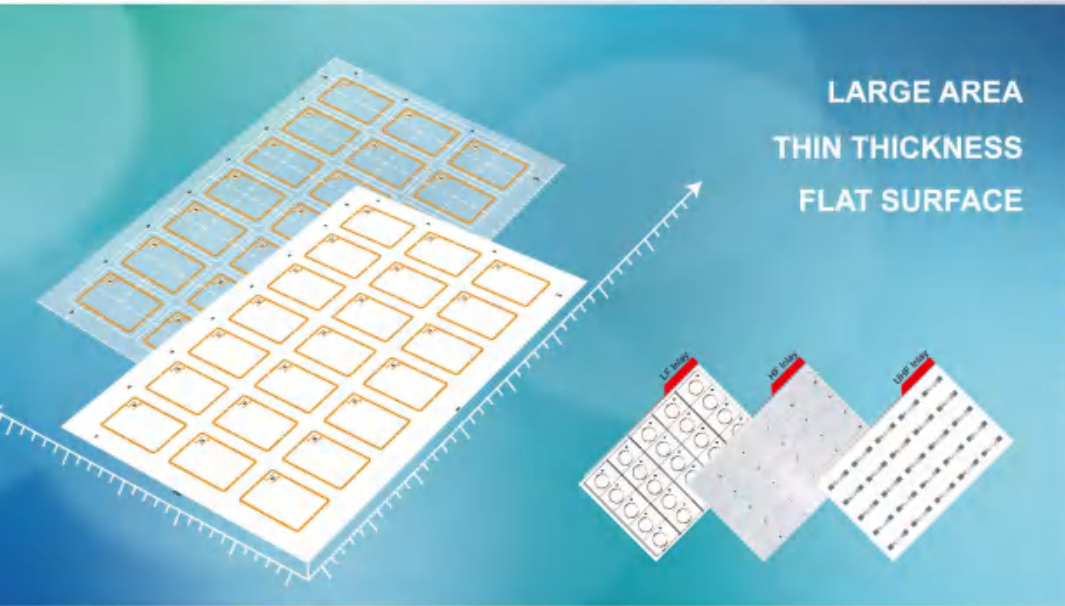
**Application:** Warehousing logistics management/ Unmanned retail/Clothing management/Library management/Archives management/Jewelry manament/Vehicle management/Pharmacy management.



# » Inlay Sheet/Prelam

# Reader «

■ LF / HF / UHF



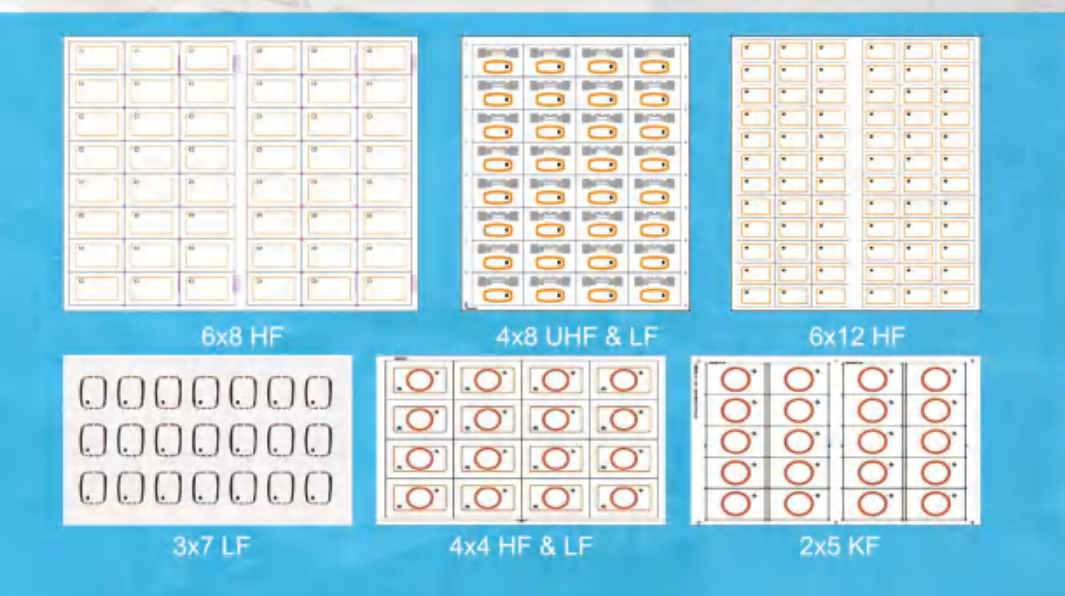
## Product details - S3

S3 smart card Reader brings together sophisticated technology and modern design to meet rigorous standards. S3 can last for 100,000 card insertion cycles. It is fully compliant with PC/SC and CCID specifications, and supports various operating systems such as Windows, Linux and Mac. It also offers an optional built-in Security Access Module (SAM) slot that supports various high security applications according to requirements. With its sleek, stylish design and powerful core, the S3 is the ideal peripheral for your smart card applications.

## Product detail - S9

S9 is a dual interface smart card reader that can access any contact and contactless smart cards following the ISO 7816 and ISO 14443 standards. S9 reader integrates conventionally separate and independent applications for contact and contactless technologies into one device. It can be used for payment systems, electronic identification, access control, software locking, loyalty program, stored value, identification, ticketing, parking and toll collection, online gaming, automatic fare collection, physical access control, etc. S9 reader is a highly cost-effective, powerful and all-in-one device that offers convenience and flexibility to many smart card applications.

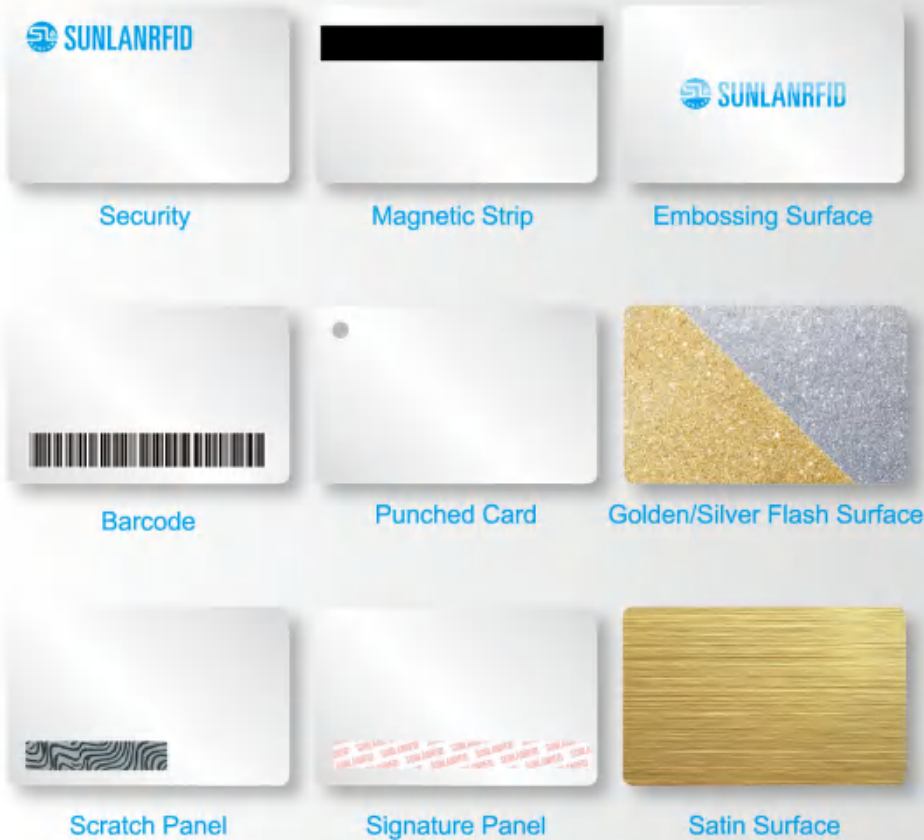
Support Protocol (Optional) :  
ISO 14443 TYPE A/B, ISO15693, and Contact Card;



## Product details - E7

E7 RFID reader with 2 lines LCD display screens, supports Dual interface card compliance to ISO14443A/B and ISO7816. Support Chip (Optional)  
ISO 14443 TYPE A /ISO7816  
PHILIPS: MIFARE Classic(s50/s70), MIFARE Pro \ MIFARE \ DESFire \ MIFARE Ultralight \ MF1ICS50 \ FM1108 \ MF1ICS70 \ contactless CPU card;  
SIEMENS: SLE4442\5542\SLE4418\4428\SLE4404\SLE4406, and other compatible memory cards.  
CPU Card compliance to ISO7816, T=0, T=1.  
E7 RFID reader mainly used in payment application such as E-payment, e-Government, e-Banking-Healthcare, E-commerce transportation, Loyalty Program.

## » Customization



Thermal Printing-Black  
 Thermal Printing-Brown  
 Thermal Printing-Silver  
 Laser number-Orange

0123456789  
 0123456789  
 0123456789  
 0123456789



QR Code-black  
 DOD UV Printing

0123456789

Inkjet printing

1 2 3 4 5 6 7 9 1 6 1

Embossed number

## SUNLANRFID Chip List (part)

Brand name	Chip Type	Protocol	Capacity	Frequency	Function
NXP	Hitag 1	ISO11784/85	2K Bit	125KHz	Read/Write
	Hitag 2	ISO11784/85	256 Bit	125KHz	Read/Write
	Hitag S256	ISO11784/85	256 Bit	125KHz	Read/Write
	Hitag S2048	ISO11784/85	2K Bit	125KHz	Read/Write
	NTAG213	ISO/IEC 14443 Type A	144/180 Byte	13.56MHz	Read/Write
	NTAG215/NTAG216	ISO/IEC 14443 Type A	540/924 Byte	13.56MHz	Read/Write
	NTAG413 DNA	ISO/IEC 14443 Type A	160Byte	13.56MHz	Read/Write
	NTAG 424 DNA	ISO/IEC 14443 Type A	416Byte , include 128 security data file	13.56MHz	Read/Write
	NTAG 424 DNA TT	ISO/IEC 14443 Type A		13.56MHz	Read/Write
	MIFARE® Classic 1K	ISO/IEC 14443 Type A	1K Byte	13.56MHz	Read/Write
	MIFARE® Classic 4K	ISO/IEC 14443 Type A	4K Byte	13.56MHz	Read/Write
	MIFARE® Plus S/X/EV1 2K/4K	ISO/IEC 14443 Type A	2K/4K Byte	13.56MHz	Read/Write
	MIFARE® Plus SE	ISO/IEC 14443 Type A	1K Byte	13.56MHz	Read/Write
	MIFARE® DESFire EV1	ISO/IEC 14443 Type A	2KB/4KB/8KB/256	13.56MHz	Read/Write
	MIFARE® DESFire EV2	ISO/IEC 14443 Type A	2K/4K/8K Byte	13.56MHz	Read/Write
	MIFARE® DESFire Light	ISO/IEC 14443 Type A	1 K Byte	13.56MHz	Read/Write
	MIFARE Ultralight C	ISO/IEC 14443 Type A	192 Byte	13.56MHz	Read/Write
	MIFARE Ultralight® EV1	ISO/IEC 14443 Type A	USER 384 EEOPOM 640	13.56MHz	Read/Write
	MIFARE Ultralight®	ISO/IEC 14443 Type A	EEPROM 512 USER 384	13.56MHz	Read/Write
	MIFARE Ultralight Nano	ISO/IEC 14443 Type A	40 Bit	13.56MHz	Read/Write
	ICODE SLI-L	ISO/IEC 15690	512 Bit	13.56MHz	Read/Write
	ICODE SLI-S	ISO/IEC 15691	2048 Bit 2K	13.56MHz	Read/Write
	ICODE SLIX	ISO/IEC 15692	1024 Bit 1K	13.56MHz	Read/Write
I CODE SLI	ISO/IEC 15693	1024 Bit 1K	13.56MHz	Read/Write	
UCODE EPC G2	EPC Class 1 Gen2	512 Bit	860-960MHz	Read/Write	
Fudan	FM11RF08	ISO/IEC 14443 Type A	1K byte	13.56MHz	Read/Write
	FM11RF32	ISO/IEC 14443 Type A	4K Byte	13.56MHz	Read/Write
	FM1208	ISO/IEC 14443 Type A	8K Byte	13.56MHz	Read/Write
	FM4442	ISO 7816	256 byte	..	..
	FM4428	ISO 7816	1K byte	..	..
	FM5528	ISO 7816	1K byte	..	..
EM-Marin	TK4100	ISO 7816	64 Bit	125KHz	Read
	EM4423	ISO/IEC 15693 + ISO/IEC		13.56MHz+860	Read/Write
	EM4205 / EM4305	ISO 11784 Compatible	512 bit	125KHz	Read/Write
	EM4200	ISO 11784 Compatible	64 bit	125KHz	Read
	EM4450 / EM4550	EM4550 with Gold Bumps	1K bit	125KHz	Read/Write
Atmel	ATA5577	ISO 11784 Compatible	363 bit	125KHz	Read/Write
Impinj	Monza 4	ISO/IEC18000-6C	User Memory 32-512	860-960MHz	Read/Write
	Monza 5	ISO/IEC18000-6C	128 Bit	860-960MHz	Read/Write

## SUNLANRFID Chip List (part)

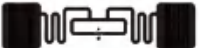










Brand name	Chip Type	Protocol	Capacity	Frequency	Function
Alien	ALN-9662 H3	ISO/IEC18000-6C	95/512bit	860-960MHz	Read/Write
	ALN-9640 H3	ISO/IEC18000-6C		860-960MHz	Read/Write
	ALN-9630 H3	ISO/IEC18000-6C		860-960MHz	Read/Write
	ALN-9610 H3	ISO/IEC18000-6C		860-960MHz	Read/Write
	ALN-9654 H3	ISO/IEC18000-6C		860-960MHz	Read/Write
	ALN-9634 H3	ISO/IEC18000-6C		860-960MHz	Read/Write
	ALN-9629 H3	ISO/IEC18000-6C		860-960MHz	Read/Write
	ALN-9613 H3	ISO/IEC18000-6C		860-960MHz	Read/Write
	ALN-9740 H4	ISO/IEC18000-6C		860-960MHz	Read/Write
	ALN-9730 H4	ISO/IEC18000-6C		860-960MHz	Read/Write
	ALN-9762 H4	ISO/IEC18000-6C		860-960MHz	Read/Write
	ALN-9710 H4	ISO/IEC18000-6C		860-960MHz	Read/Write
	ALN-9741 H4	ISO/IEC18000-6C		860-960MHz	Read/Write
	ALN-9770 H4	ISO/IEC18000-6C		860-960MHz	Read/Write
	ALN-9768 H4	ISO/IEC18000-6C		860-960MHz	Read/Write
	ALN-9714 H4	ISO/IEC18000-6C		860-960MHz	Read/Write
	ALN-9726 H4	ISO/IEC18000-6C		860-960MHz	Read/Write
	ALN-9728 H4	ISO/IEC18000-6C		860-960MHz	Read/Write
	ALN-9720 H4	ISO/IEC18000-6C		860-960MHz	Read/Write
	ALN-9715 H4	ISO/IEC18000-6C		860-960MHz	Read/Write
ALN-9713 H4	ISO/IEC18000-6C		860-960MHz	Read/Write	
ALN-9745 H4	ISO/IEC18000-6C		860-960MHz	Read/Write	
ST	ST25TB512	ISO/IEC 14443 Type B	512bit	13.56MHz	Read/Write
	ST25TB02K	ISO/IEC 14443 Type B	2K bit	13.56MHz	Read/Write
	ST25TA02KB	ISO/IEC 14443 Type A	2K bit	13.56MHz	Read/Write
	ST25TA 16K / 64K	ISO/IEC 14443 Type A	16K/64K	13.56MHz	Read/Write
	ST25TV02K	ISO/IEC 15693	2K bit	13.56MHz	Read/Write
	ST25TV512	ISO/IEC 15693	512 bit	13.56MHz	Read/Write
	ST25TV64K	ISO/IEC 15693	64K	13.56MHz	Read/Write
TI	TI2048	ISO/IEC 15693	2K Byte = 2048k bit	13.56MHz	Read/Write

Other chips also available upon request and quantity of order.







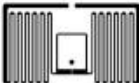


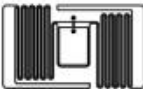


## SUNLANRFID UHF Antenna List-NXP,UCODE DNA

SN#	PN#	Chip	Antenna size	Antenna Pics	Read Range	Applications
1	1275-DNA	U CODE DNA	12*75mm		4m	With antenna no version





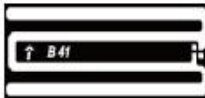




## SUNLANRFID UHF Antenna List-Alien/H3/H4

SN#	PN#	Chip	Antenna size	Antenna Pics	Read Range	Applications
1	9662/9762	H3/H4	17*70mm		4.45m	Asset Management
2	9654	H3	19*93mm		6.7m	Tray, tire windshield label
3	9640/9740	H3/H4	8.15*94.8mm		4.3m	Asset Management
4	9634	H3	44*46mm		5m	Retail Management Garment
5	9630/9730	H3/H4	9.5*70mm		3m	Asset Management
6	9629	H3	22.5*22.5mm		2.55m	Health care Garment
7	9620	H3	9.7*27mm		1m	Jewelry
8	9610/9710	H3/H4	10.325*44.45mm		4.4m	Asset Management
9	9613	H3	9*12mm		20cm	Jewelry Health Care Food Access control
10	9627	H3	30*45mm		2.15m	Garment
11	9503-H3	H3	3*95mm		2.7m	Library Liquor


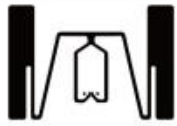




## SUNLANRFID UHF Antenna List-Impinj/MR6/MR6P

SN#	PN#	Chip	Antenna size	Antenna Pics	Read Range	Applications
1	4015-R6	MR6	15*40mm		3m	Garment Retail
2	5030-R6	MR6	50*30mm		6m	Garment
3	7015-R6	MR6	70*15mm		7m	Garment
4	A61F	MR6	15*40mm		3m	Garment Retail
5	9503-R6	MR6	3*95mm		6m	Library Liquor Logistics
6	9511-R6	MR6	11*95mm		6m	Logistics Liquor
7	2212-R6	MR6	22*12.5mm		2.5m	Pharmacy Jewelry
8	1142-R6	MR6	11*42mm		3m	Jewelry
9	1027-R6	MR6	10*27mm		3m	Pharmacy Jewelry
10	1222-M6P	MR6-P	12.5*22mm		2.5m	Pharmacy Jewelry
11	1033-M6P	MR6-P	10*33mm		3m	Pharmacy Jewelry
12	1835-R6	MR6	18*35mm		2.5m	Retail


## SUNLANRFID UHF Antenna List-Impinj/M4

SN#	PN#	Chip	Antenna size	Antenna Pics	Read Range	Applications
1	H47	M4	44*44mm		6.86m	Logistics Garment Baggage Ticket
2	H41	M4	30*46mm		1.85m	Retail
3	B42	M4	8*22mm		0.5m	Jewelry
4	J41	M4	Φ12mm		0.28m	Pharmacy Jewelry
5	B41	M4	8*22mm		0.4m	Jewelry
6	F43	M4	16*26mm		0.87m	Liquor Jewelry
7	E44	M4	6*105mm		4.63m	Liquor Logistics Jewelry
8	E41B	M4	8*95mm		6.45m	Logistics
9	E41C	M4	8*95mm		6m	Logistics





## SUNLANRFID UHF Antenna List-Impinj/M5

SN#	PN#	Chip	Antenna size	Antenna Pics	Read Range	Applications
1	J51	M5	φ12mm		0.2m	Pharmacy Jewelry
2	H51	M5	50*30mm		2.5m	Garment
3	F51	M5	22.5*22.5mm		0.2m	Garment Health care
4	E53	M5	44*18mm		2.95m	Garment
5	E51	M5	95*8mm		4.6m	Logistics
6	E52	M5	68*14mm		3.45m	Garment

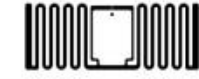




## SUNLANRFID UHF Antenna List-EM4423

SN#	PN#	Chip	Antenna size	Antenna Pics	Read Range	Applications
1	2828	EM4423	28*28mm		2.5m	High frequency point 13.8MHZ

## SUNLANRFID UHF Antenna List -NXP/UCODE7

SN#	PN#	Chip	Antenna size	Antenna Pics	Read Range	Applications
1	4015-U7	UCODE 7	15*40mm		4m	Garment Retail Management
2	5030-U7	UCODE 7	30*50mm		5m	Garment
3	7015-U7	UCODE 7	15*70mm		7m	Garment
3	1835-U7	UCODE 7	18*35mm		2.5m	Retail Management With antenna no version

## SUNLANRFID UHF Antenna List-NXP/UCODE8

SN#	PN#	Chip	Antenna size	Antenna Pics	Read Range	Applications
1	4015-U8	UCODE 8	15*40mm		3.5m	Garment Retail
2	1570-U8	UCODE 8	15*70mm		8m	Garment
3	3050-U8	UCODE 8	30*50mm		8m	Garment
4	3072-U8	UCODE 8	30*72mm		10m	Warehouse Logistics Packaging
4	2294-U8	UCODE 8	22*94mm		12m	Warehouse Logistics Packaging